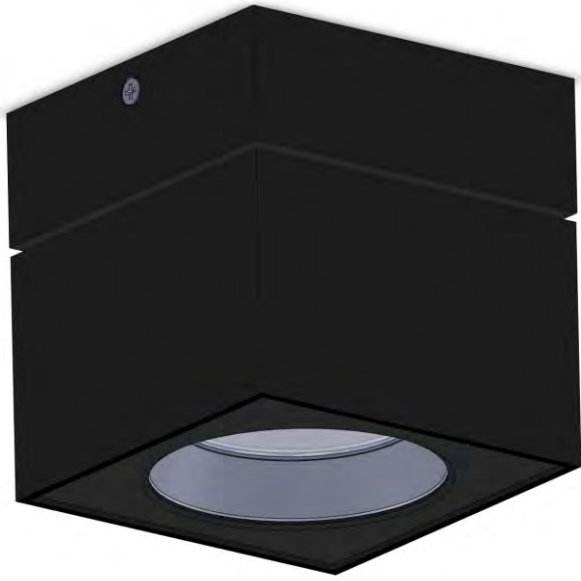


905 DOWN LIGHT LUMINAIRES

IP 20  120-277V 

Catalog No. _____
 Date _____
 Type _____
 Project _____

SHARP CoB LED 12.6W (1100 lm @ 350mA)
 18 W (1500 lm @ 500mA)



Applications:

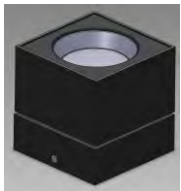
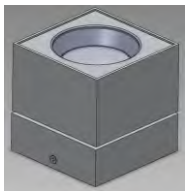
Surface mount down light

Description:

Surface mount square fixture with latest high output / high efficiency sharp CoB LED provides maximum reliability, Performance, and color consistency. Multiple reflector beam spreads and finishes allows for creative lighting solution to illuminate architectural spaces. Aluminum housing with separate driver compartment available in Black, White or Silver

Dimension:

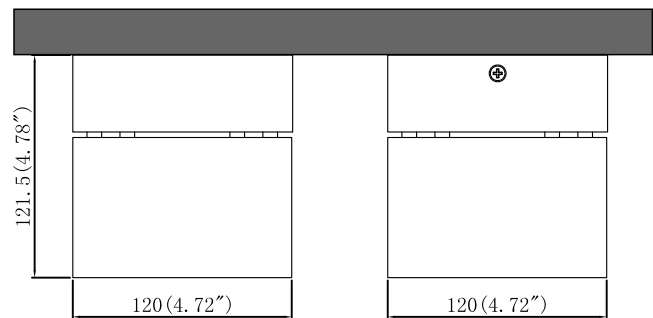
H=4.78" , W=4.72"



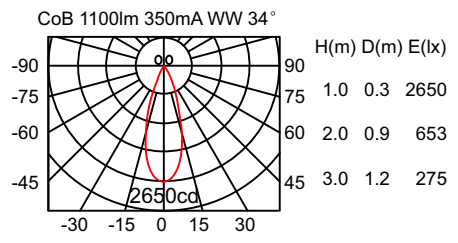
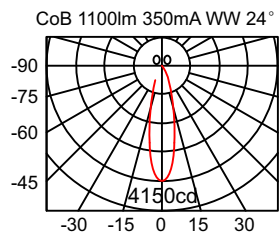
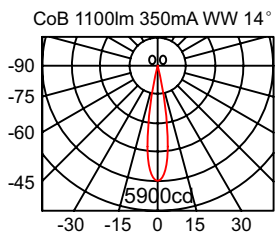
White

Silver

Black



Light distribution map:



Ordering Codes

Follow the steps to specify your fixture. To order a 905 in 350mA driver @ 120V input in 3000K White with 14 degree reflector

Example: To order 905 Silver with 10 degree reflector in 120V Non-dimmable driver = **905-14-SV-120V-830-3**

| 1 Product Code | 2 Reflector Code | 3 Finish Code | 4 Voltage Code | 5 CCT Code | 6 Driver Code |
|----------------|------------------|-----------------------------------|----------------|------------|------------------------|
| 905 | 14 | WH White SV Silver BK Black | 120V 277V | 830 840 | (3) 350mA (5) 500mA |